

Skills Sheet #1 - Sniff

Flash the internal Arduino LED on/off every second

LED = Light Emitting Diode (a really power efficient light bulb)

Code

```
make LED digital output D13
```

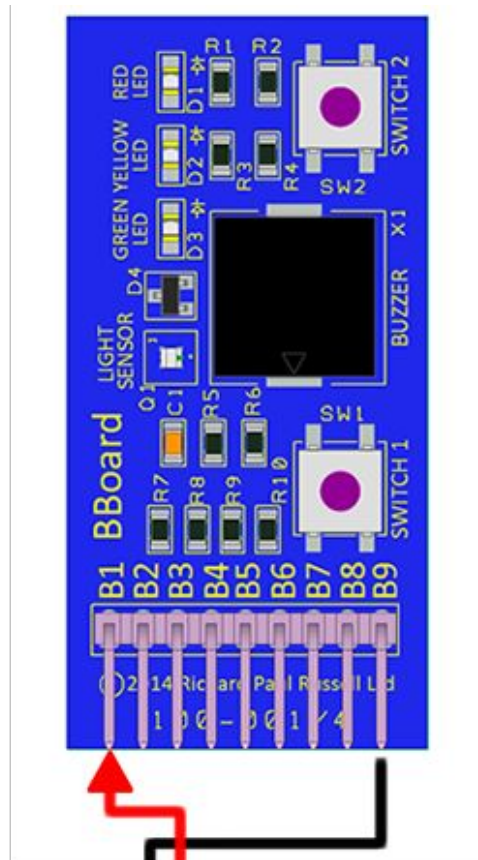
```
when start
```

```
. forever  
. . set LED to on  
. . wait 1 secs  
. . set LED to off  
. . wait 1 secs
```

Code explanation

<pre>make LED digital output D13;</pre>	Set LED port number (13) to be an output port as it will be powering the internal led
<pre>set LED to on</pre>	Sends a HIGH signal to LED port (13) which switches led on
<pre>set LED to off</pre>	Send a LOW signal to LED port which switches led off
<pre>wait 1 secs</pre>	Waits for 1000 milliseconds (1 second)
<pre>forever</pre>	This function runs continuously after the setup function has finished

Circuit layout to connect Arduino (A) to BBoard (B) red LED



Instructions

- A/GND to B/B9
- A/D13 to B/B1

BBoard pins

- **B1 = Red LED**
- B2 = Yellow LED
- B3 = Green LED
- B4 = Buzzer
- B5 = Button 1
- B6 = Button 2
- B7 = Light sensor
- B8 = +5v
- **B9 = Ground**

